

Connect [+] - Power Bass

Power Bass delivers better low frequency reproduction to streamed signals- providing a more natural harmonic balance

People often complain that listening to the TV, radio or music via their hearing instruments is not particularly enjoyable. But when sound is delivered directly from the sound source to the hearing instruments, the listening experience becomes far more pleasurable. This is what Oticon ConnectLine™ is designed to do.

ConnectLine TV and ConnectLine Phone solutions deliver sound signals from TVs, mobile and landline phones directly to hearing instruments via the Oticon Streamer, with excellent signal-to-noise ratio. Oticon Agil takes direct wireless streaming of sounds to entirely new heights with the introduction of two highly innovative signal processing advances: Power Bass and Music Widening.

Power Bass

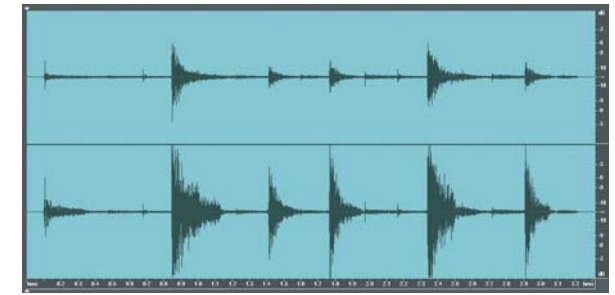
Music encompasses a wide range of frequencies as well as dynamic variations. Thus, the more access people can gain to these frequencies and dynamic changes, the greater the joy of listening will be. When streaming sound to open or vented hearing instruments, low frequency (bass) content tends to leak out of the ear canal, which limits the potential bass output of the streamed signal. The bass content is further limited by conventional compression strategies, as these cannot react fast enough to dynamic changes of the low frequencies without distorting the signal.

Power Bass enables intelligent provision of optimal low frequency amplification. Zero-delay processing ensures no signal distortion. With PowerBass not only is the bass content of the signal optimally increased; the perception of bass is enhanced using low frequency overtones.

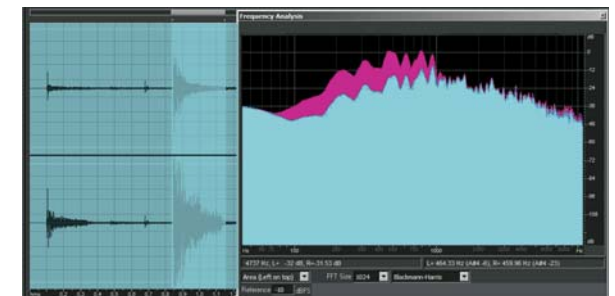


Streamer - Uses a wireless Bluetooth connection to connect Agil to electronic instruments such as phones, TV, MP3 players and more.

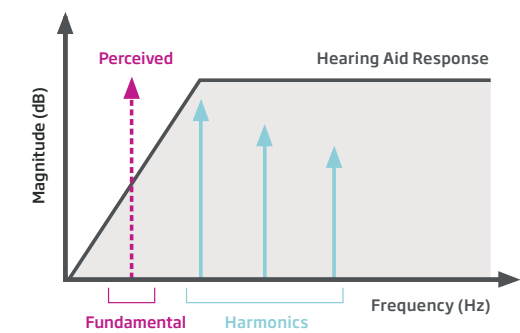
Drum Riff with (bottom) and without (top) Low Frequency Enhancement



Section of Drum Riff with (red) and without (blue) Low Frequency Enhancement



When harmonics are present (blue), they induce the perception of a common fundamental frequency component (red).



Power Bass synthesizes additional harmonics to enhance the perception of lower frequency components.

